

SITE SUMMARY



SEPTEMBER 2020

DEFENSE ENVIRONMENTAL RESTORATION PROGRAM FOR FORMERLY USED DEFENSE SITES

Across the country, the Department of Defense acquired properties, often during times of war, to use for military training, testing, and demonstrations. When no longer needed, many of these properties were cleaned up according to the best practices available at the time and then transferred to other owners such as private individuals or other government entities. These Formerly Used Defense Sites (FUDS) can range from privately-owned farms to National Parks. They also include residential, industrial, and educational properties. We are committed to protecting people and the environment and improving public safety by cleaning up these properties. The Defense Environmental Restoration Program for Formerly Used Defense Sites was established to evaluate and, if necessary, to remediate Formerly Used Defense Sites. The U.S. Army Corps of Engineers (Corps) manages the program on behalf of the Department of Defense.

Congress passed the Comprehensive Environmental Response, Compensation, and Liability Act, also known as Superfund, in 1980 and the Superfund Amendments and Reauthorization Act in 1986. These laws give the Corps the authority for certain cleanup activities and dictates the process we must follow. We conduct investigations to determine the potential risk to people and the environment from the military's use of the property. Public involvement and community participation are important components of the process. The Corps partners with stakeholders throughout the process, including congressional representatives, state and local governments, regulatory and environmental agencies, and affected property owners.

SUMMARY

The former Motlow Range (also known as the Camp Forrest Motlow Area) comprises 7,528 acres across Moore and Coffee Counties in Tennessee. In the early 1940s, the Department of Defense leased the former Motlow Range for use as an auxiliary maneuver area and artillery range to the large training facility Camp Forrest. The area supported activities for light artillery, mortars, and machine guns and featured nine over-lapping ranges for anti-tank, anti-aircraft, aircraft machine guns, and various small arms. At the height of its usage, maneuvers at Motlow Range involved more than 13,000 troops. After WWII, the site was deactivated and declared surplus. The former range is now owned by multiple entities including the Motlow State Community College, the Cumberland Springs Land Company, and private property owners. The majority of the site is undeveloped, wooded land used primarily for timber sales and wheat farming, and sometimes leased for hunting. Multiple inspections and removal actions have been conducted over portions of the Motlow Range. Uncovered munitions include large artillery projectiles, mortars, rockets, and a variety of munitions debris. As such, the Corps is concerned about potential hazards resulting from the military's use of the former Motlow Range. These hazards have been grouped into three manageable project areas:

Project 07 (37mm Impact Area): This project consists of 142 acres of land south of Motlow State Community College and north of the Lynchburg Highway (State Highway 55). During the 2014 Remedial Investigation (RI) fieldwork, explosive hazards in the form of 37mm HE projectiles, a 155mm shrapnel projectile, and one 37mm fuze were found. Debris from small arms; 37mm, 75mm, and 155mm projectiles; 60mm and 81mm mortars;



FORMERLY USED DEFENSE SITES | Motlow Range

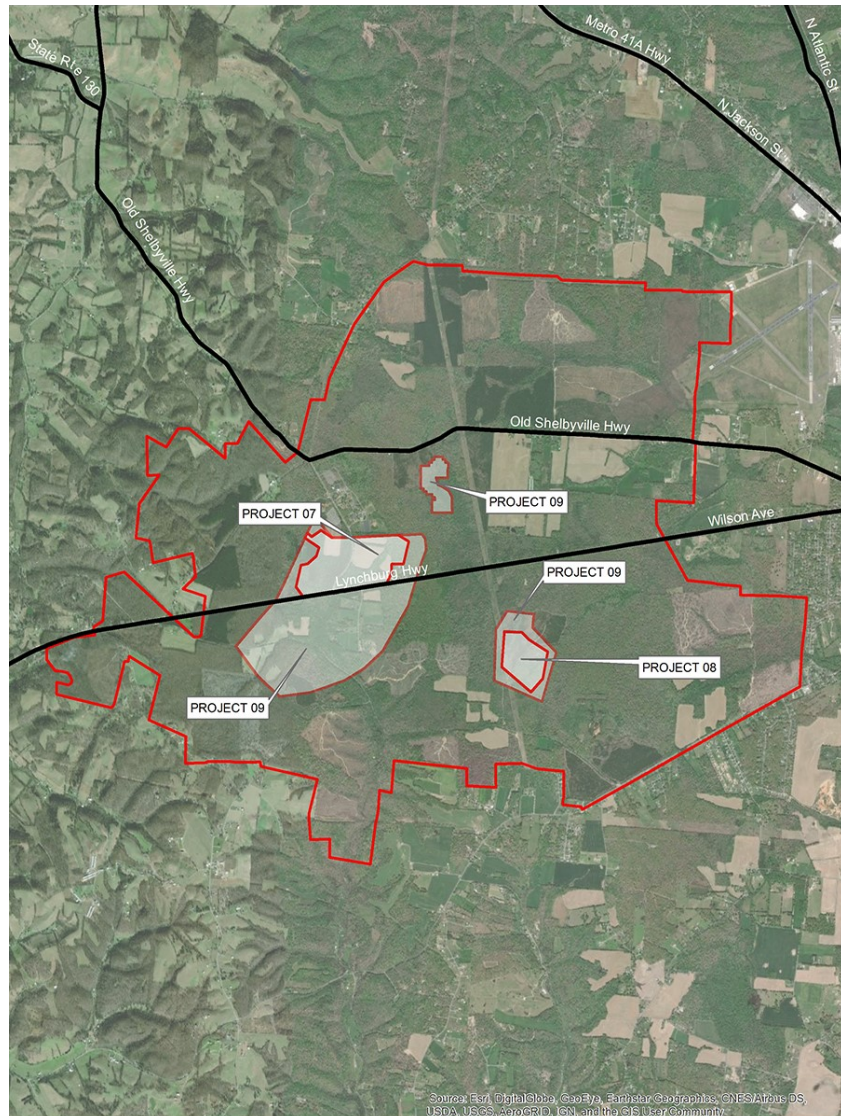
and other fragmentation were also found. A Remedial Action, which includes surface and sub-surface ordnance removal, is ongoing.

Project 08 (Mortar Impact Area): This project consists of 53 acres. During the RI, a potentially explosive 60mm mortar was found in the subsurface, along with debris from mortar tail fins, fuzes, and other unidentifiable fragmentation. A Remedial Action, which includes surface and sub-surface ordnance removal, is ongoing.

Project 09 (Buffer Area): This project consists of three separate parcels of land that total 520 acres. During the RI, minimal munitions debris was found within two of the parcels that are buffer areas to Projects 07 and 08 listed above. The third parcel is located in the center of the former Motlow Range and consists of wetlands. Unexploded munitions were found here in 2007, but due to the wet conditions of this parcel, it was not investigated during the RI. Remedial Action activities, which include installation of signs for educational awareness, are ongoing.

DOCUMENTS

All project documents can be viewed through the administrative record at the Motlow State Community College Library, 6015 Ledford Mill Road Tullahoma, TN 37388.



SAFETY FIRST: Remember the 3 Rs

Because of how the military used the site, there could potentially be buried munitions in portions of the former Motlow Range. These could be dangerous and may not be easily recognizable. Never touch, move, or disturb something you think may be a munition. Remember the 3 Rs: Recognize, Retreat, Report.

Recognize: The item you found could be dangerous. **Retreat:** Do not touch it in any way, and leave the area.
Report: Call 911 immediately.



For More Information

Documents are available at the
Motlow State Community College Library
6015 Ledford Mill Road Tullahoma, TN 37388
Telephone: 931.393.1500

U.S. Army Corps of Engineers
Savannah District
100 West Oglethorpe Avenue
Savannah, GA 31401

U.S. ARMY CORPS OF ENGINEERS

